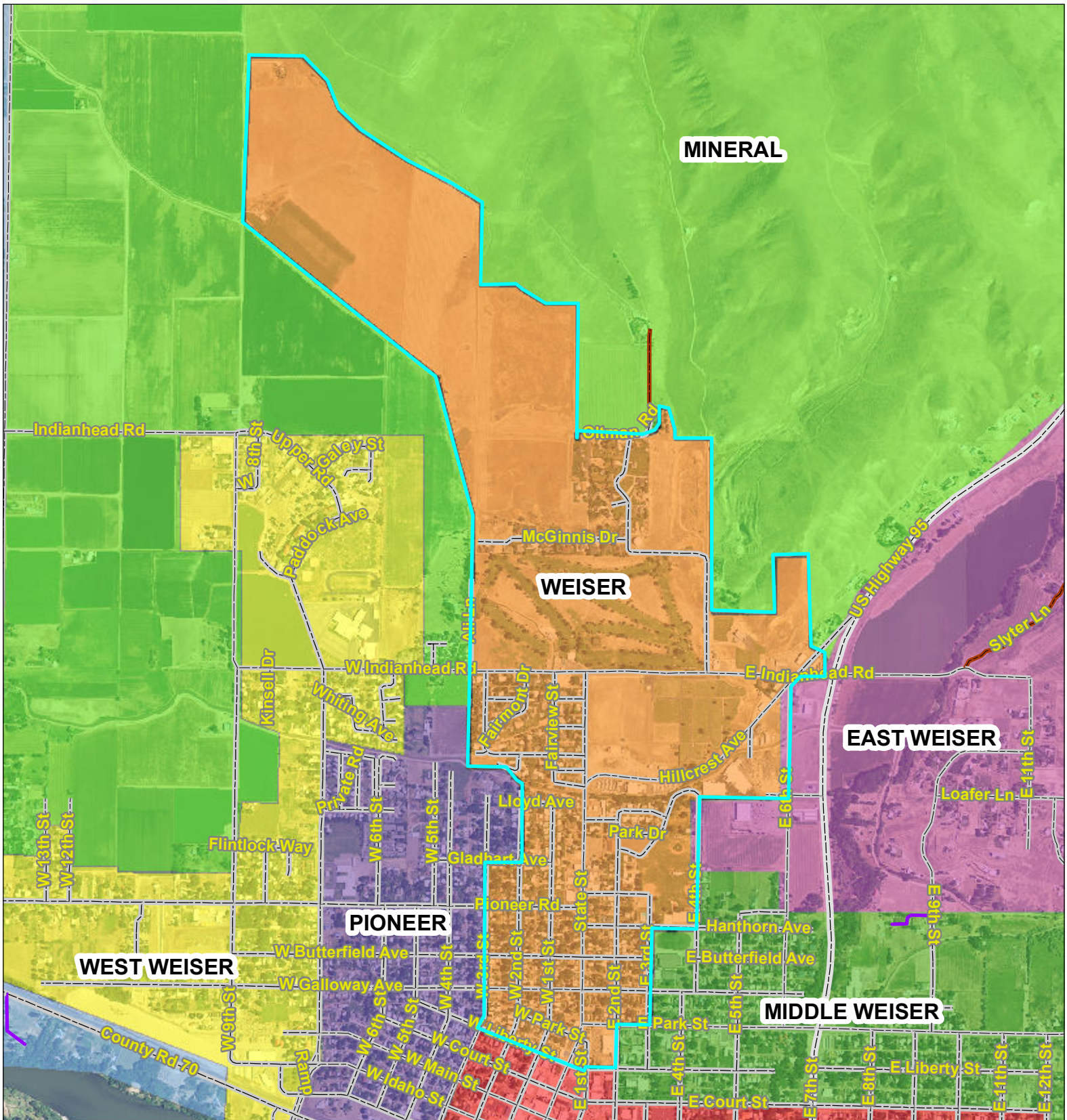
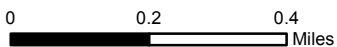




THIS MAP CREATED BY THE OFFICE OF THE
WASHINGTON COUNTY ASSESSOR



BASED ON GOVERNMENT SURVEYS & OFFICIAL RECORDS
ON FILE AT THE OFFICE OF THE COUNTY RECORDER OF
WASHINGTON COUNTY, IDAHO.
FOR ASSESSMENT PURPOSES ONLY
DOES NOT GUARANTEE BOUNDARIES



1 inch = 1,467.1 feet

- | | | | |
|--|--------------------------|--|------------------|
| | TOWNSHIP LINES | | DIRT OR GRAVEL |
| | SECTION LINES | | U S OR STATE HWY |
| | 1/4 SECTION LINES | | PAVED |
| | RIVERS | | PAVED |
| | | | GRAVEL OR DIRT |
| | | | CITY STREETS |
| | | | NATIONAL FOREST |
| | | | PRIVATE |