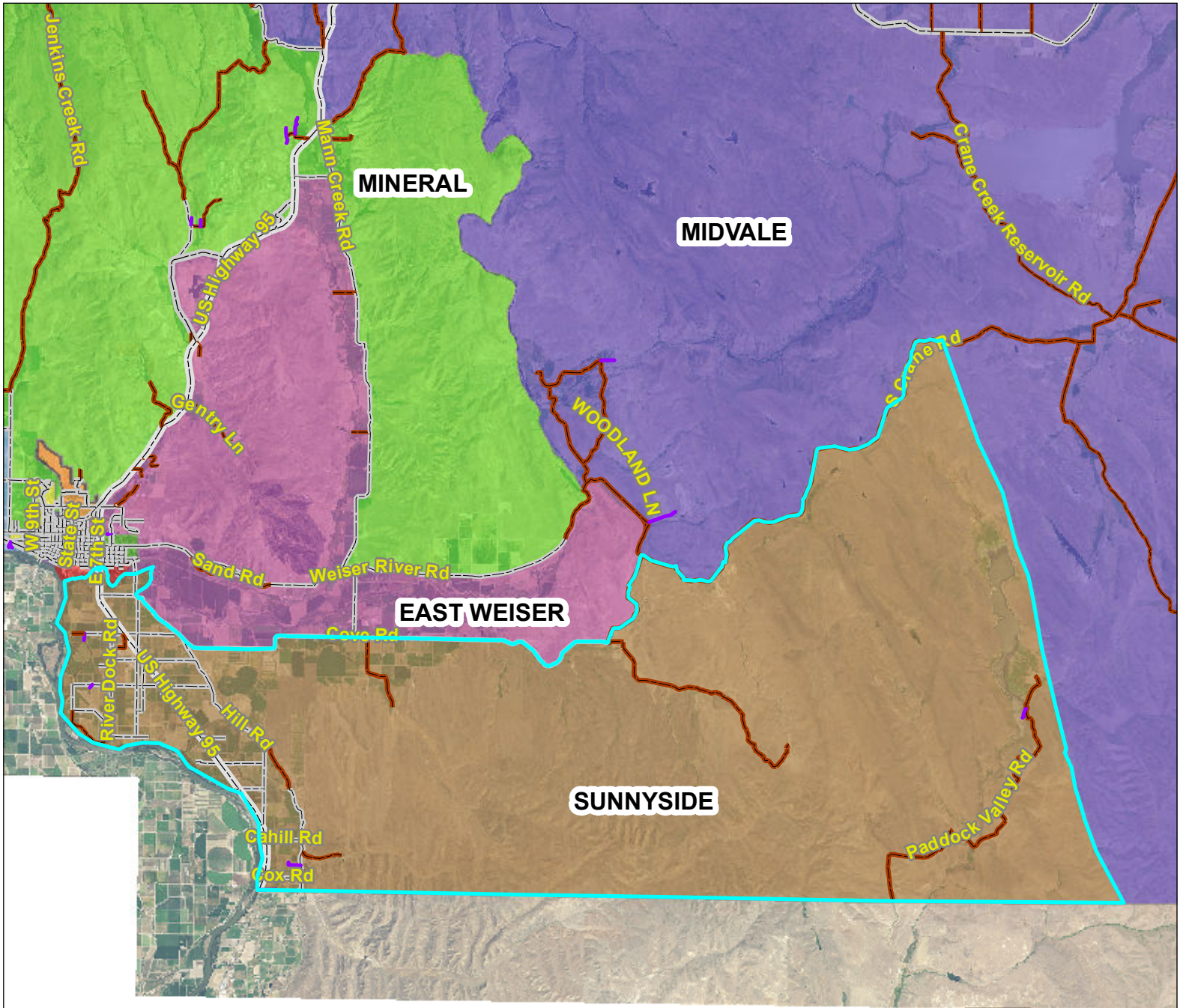




THIS MAP CREATED BY THE OFFICE OF THE
WASHINGTON COUNTY ASSESSOR



BASED ON GOVERNMENT SURVEYS & OFFICIAL RECORDS
ON FILE AT THE OFFICE OF THE COUNTY RECORDER OF
WASHINGTON COUNTY, IDAHO.
FOR ASSESSMENT PURPOSES ONLY
DOES NOT GUARANTEE BOUNDARIES

0 2 4 Miles 1 inch = 14,810.7 feet

- TOWNSHIP LINES
- SECTION LINES
- 1/4 SECTION LINES
- RIVERS

- ROADS - ALL**
- U S OR STATE HWY
- PAVED
- PAVED
- GRAVEL OR DIRT

- DIRT OR GRAVEL
- CITY STREETS
- NATIONAL FOREST
- PRIVATE