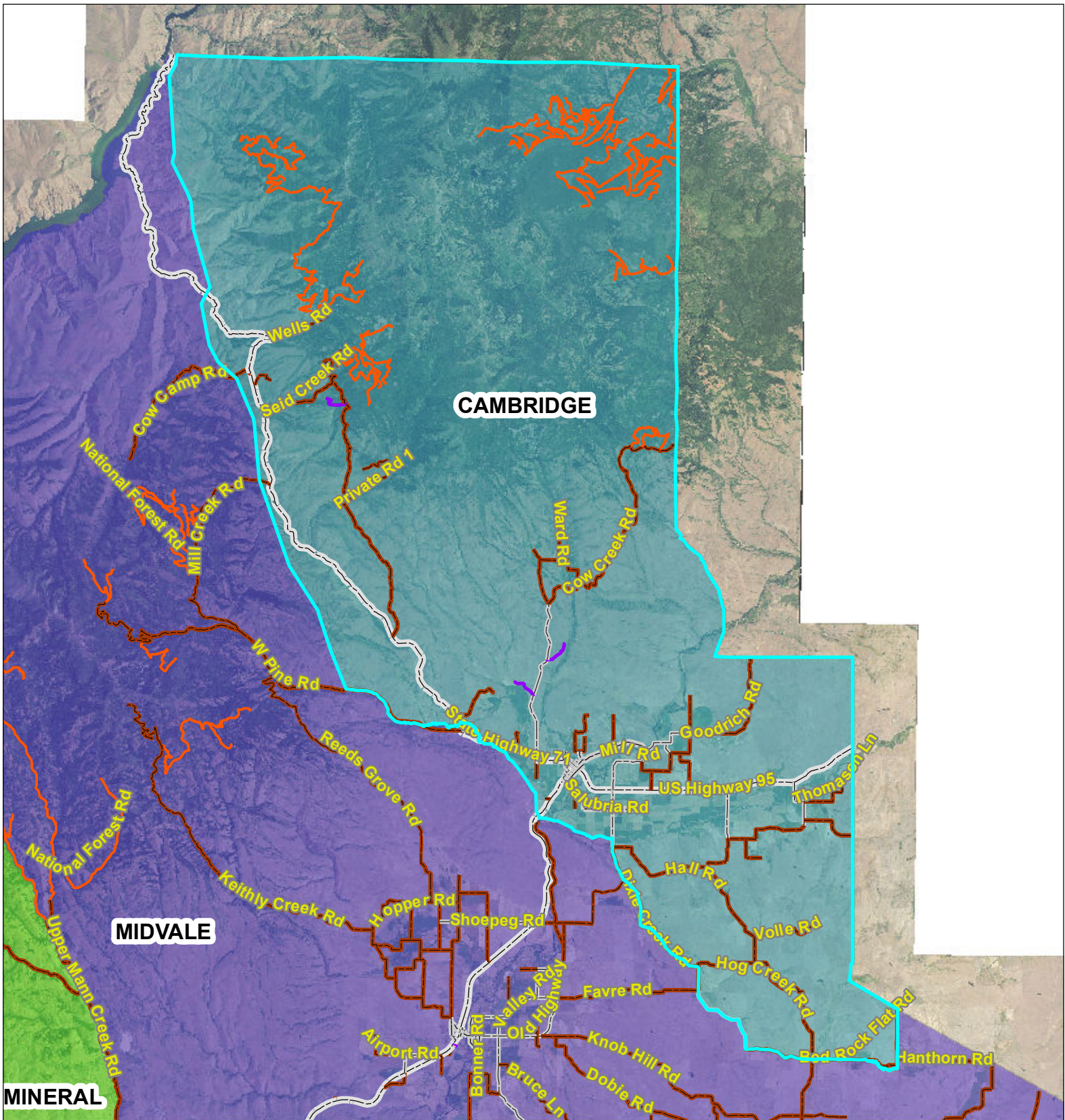




THIS MAP CREATED BY THE OFFICE OF THE
WASHINGTON COUNTY ASSESSOR



BASED ON GOVERNMENT SURVEYS & OFFICIAL RECORDS
ON FILE AT THE OFFICE OF THE COUNTY RECORDER OF
WASHINGTON COUNTY, IDAHO.
FOR ASSESSMENT PURPOSES ONLY
DOES NOT GUARANTEE BOUNDARIES

0 2.5 5 Miles 1 inch = 17,956.5 feet

- | | | | | | |
|--|--------------------------|--|--------------------|--|------------------------|
| | TOWNSHIP LINES | | ROADS - ALL | | DIRT OR GRAVEL |
| | SECTION LINES | | | | CITY STREETS |
| | 1/4 SECTION LINES | | | | NATIONAL FOREST |
| | RIVERS | | | | PRIVATE |
| | | | | | |
| | | | | | |
| | | | | | |